

Carnegie Mellon University
Master of Software Engineering

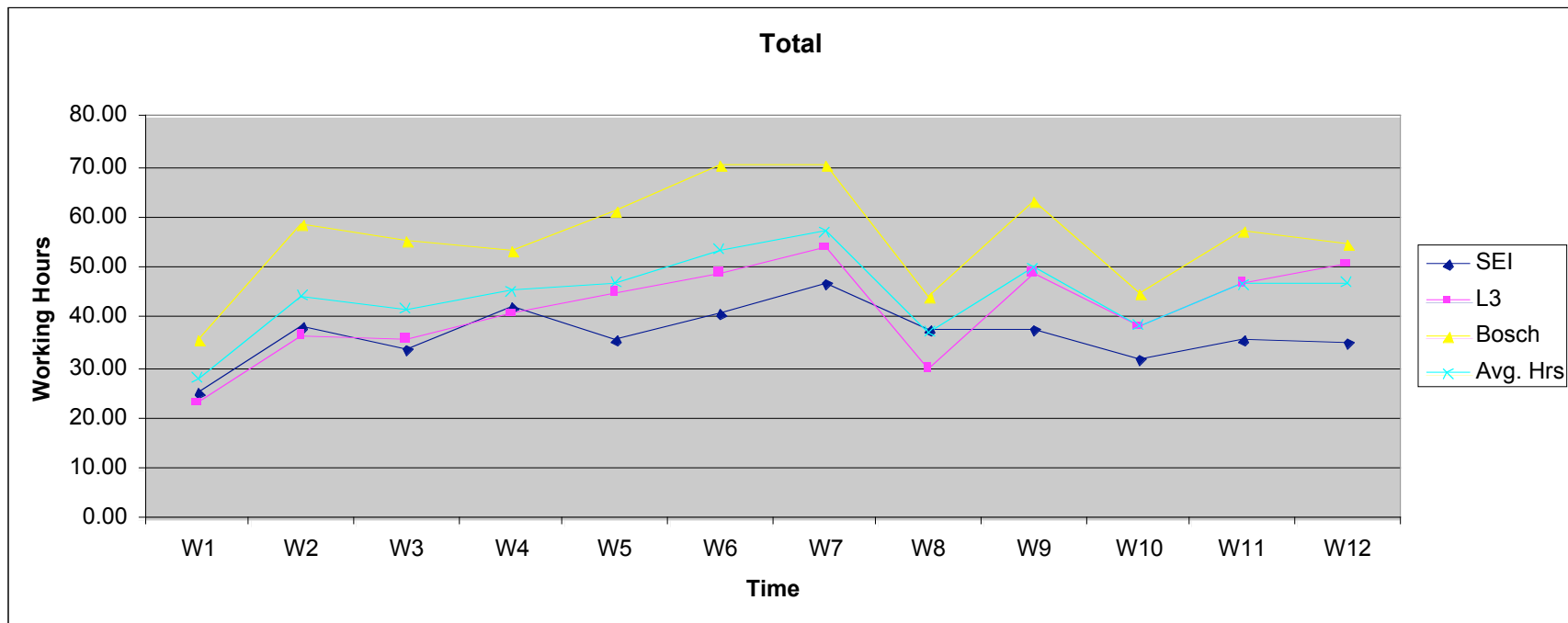
Studio Time Tracking Report (Week 1-12)

Date: 04/29/2006

MSE Students

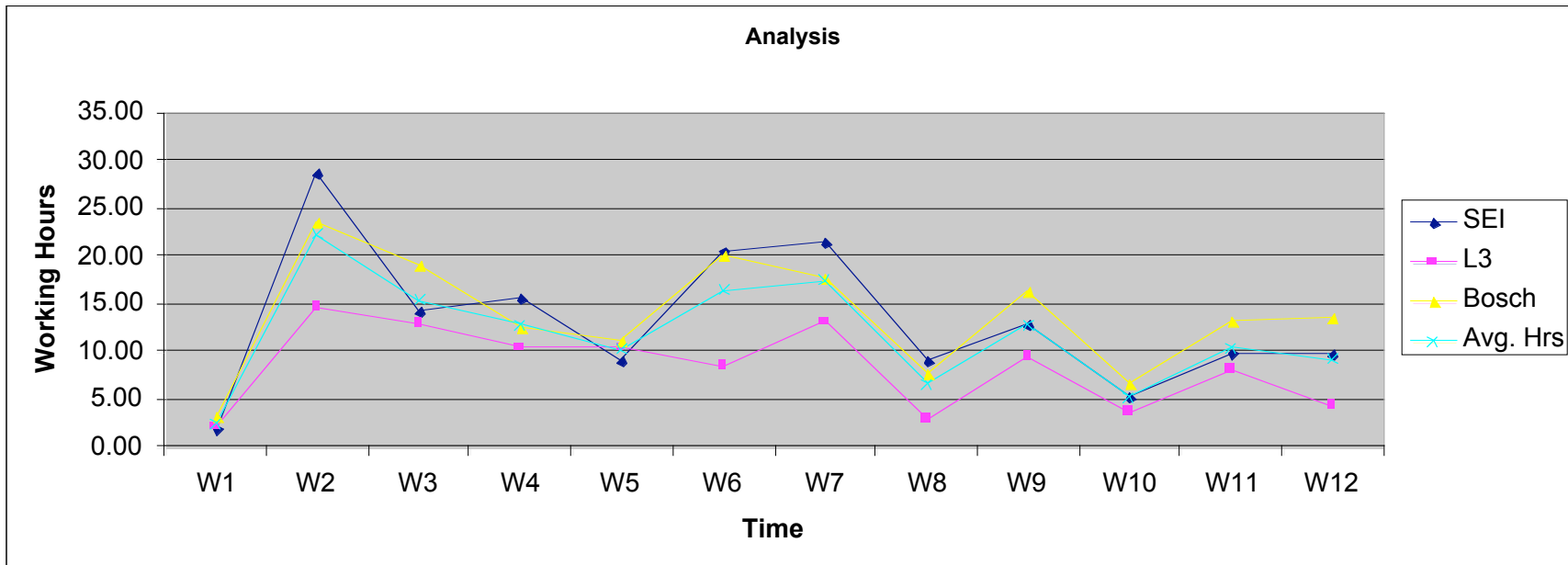
1) Total working hours (average hours for each team)

Team	W1	W2	W3	W4	W5	W6	W7	W8	W9	W10	W11	W12	Avg. Hrs
SEI	24.80	37.90	33.86	42.12	35.25	40.80	47.00	37.45	37.60	31.80	35.55	35.10	35.79
L3	23.09	36.30	35.74	40.71	44.85	48.90	53.64	29.94	48.83	38.06	46.98	50.44	38.27
Bosch	35.51	58.41	55.40	53.33	60.95	70.31	70.14	44.06	62.92	44.90	57.08	54.71	55.65
Avg. Hrs	27.80	44.20	41.67	45.39	47.02	53.34	56.93	37.15	49.78	38.25	46.54	46.75	43.23



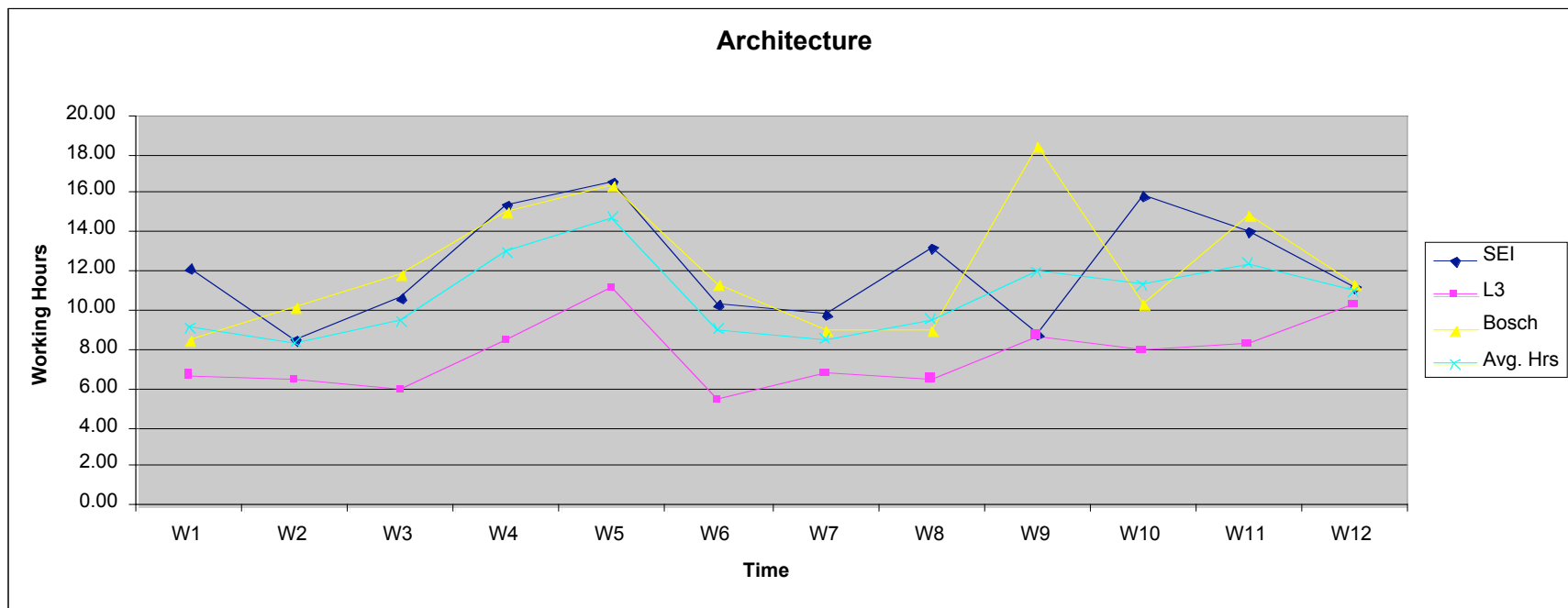
2) Analysis

Team	W1	W2	W3	W4	W5	W6	W7	W8	W9	W10	W11	W12	Avg. Hrs
SEI	1.83	28.58	14.17	15.50	9.00	20.50	21.33	9.00	12.83	5.25	9.75	9.58	14.93
L3	2.10	14.70	13.00	10.30	10.40	8.50	13.10	3.00	9.44	3.56	8.10	4.30	9.83
Bosch	3.26	23.49	19.02	12.54	10.99	19.94	17.75	7.80	16.23	6.56	13.30	13.62	14.87
Avg. Hrs	2.40	22.26	15.40	12.78	10.13	16.31	17.40	6.60	12.84	5.12	10.38	9.17	13.21



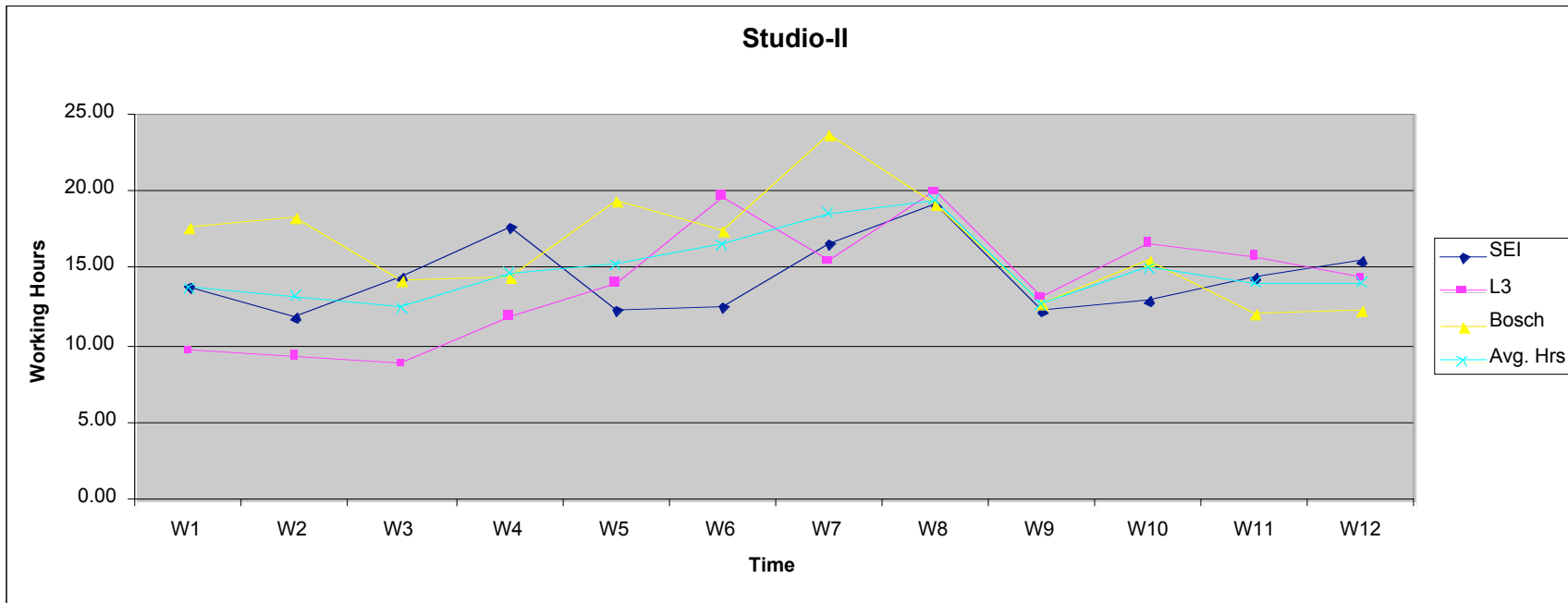
3) Architecture

Team	W1	W2	W3	W4	W5	W6	W7	W8	W9	W10	W11	W12	Avg. Hrs
SEI	12.17	8.50	10.67	15.42	16.58	10.33	9.75	13.25	8.75	15.83	14.08	11.25	12.28
L3	6.64	6.40	5.90	8.40	11.16	5.40	6.75	6.50	8.70	7.90	8.30	10.30	7.32
Bosch	8.42	10.16	11.90	15.10	16.49	11.39	8.99	8.96	18.42	10.31	14.86	11.42	12.24
<i>Avg. Hrs</i>	<i>9.08</i>	<i>8.35</i>	<i>9.49</i>	<i>12.97</i>	<i>14.74</i>	<i>9.04</i>	<i>8.50</i>	<i>9.57</i>	<i>11.96</i>	<i>11.35</i>	<i>12.41</i>	<i>10.99</i>	<i>10.61</i>



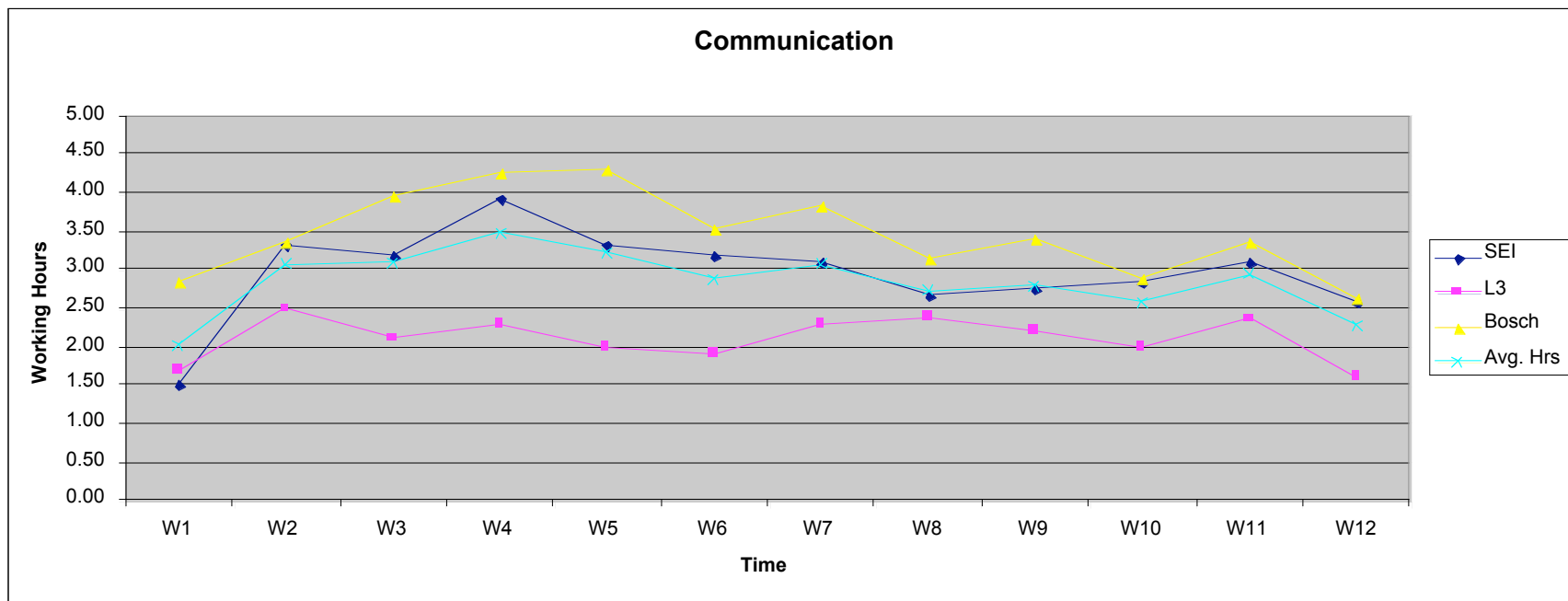
4) Studio

Team	W1	W2	W3	W4	W5	W6	W7	W8	W9	W10	W11	W12	Avg. Hrs
SEI	13.80	11.85	14.36	17.72	12.35	12.55	16.60	19.05	12.25	12.85	14.35	15.49	13.77
L3	9.65	9.30	8.83	11.86	14.09	19.60	15.49	19.93	13.07	16.60	15.72	14.34	12.22
Bosch	17.72	18.30	14.26	14.38	19.30	17.47	23.73	19.15	12.65	15.60	11.99	12.38	16.91
Avg. Hrs	13.72	13.15	12.48	14.65	15.25	16.54	18.61	19.38	12.66	15.02	14.02	14.07	14.30



5) Communication

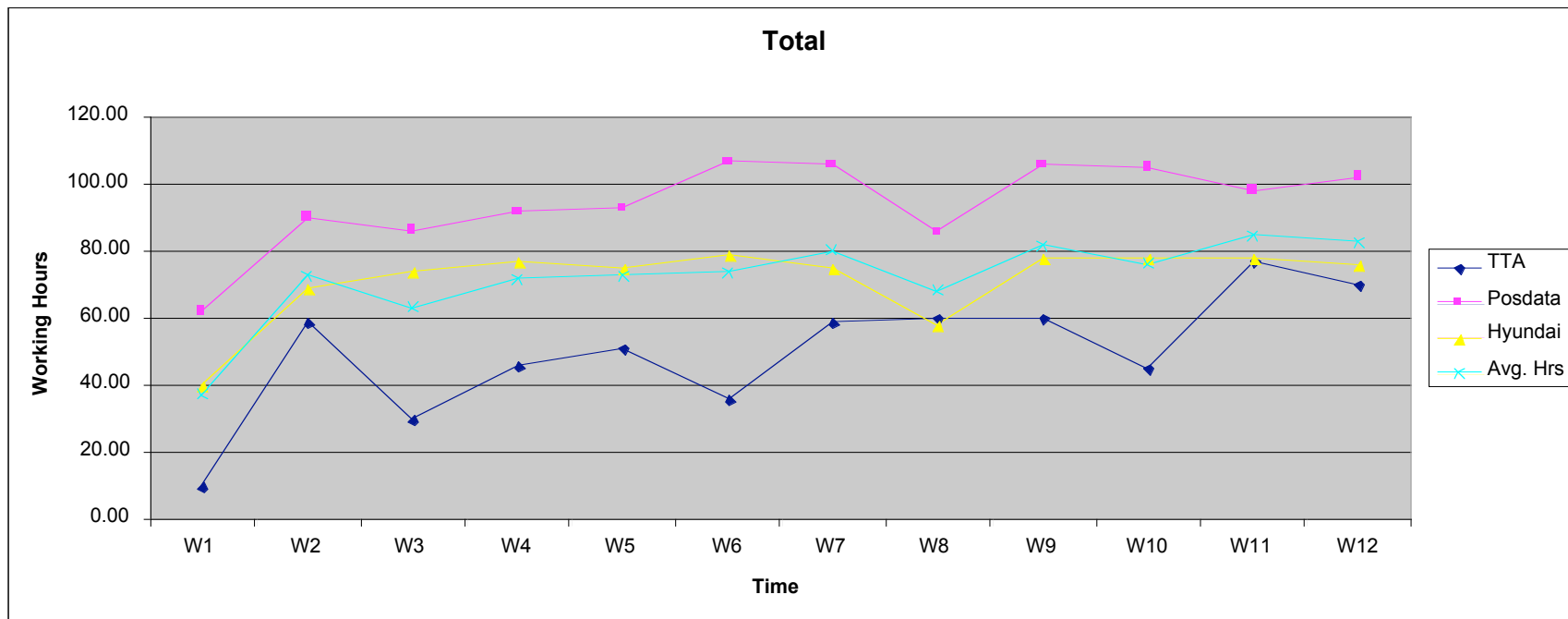
Team	W1	W2	W3	W4	W5	W6	W7	W8	W9	W10	W11	W12	Avg. Hrs
SEI	1.50	3.33	3.18	3.92	3.33	3.17	3.08	2.67	2.75	2.83	3.08	2.58	3.07
L3	1.70	2.50	2.10	2.30	2.00	1.90	2.30	2.38	2.20	2.00	2.36	1.60	2.08
Bosch	2.86	3.36	3.96	4.24	4.31	3.53	3.83	3.16	3.41	2.88	3.36	2.64	3.71
Avg. Hrs	2.02	3.06	3.08	3.49	3.21	2.87	3.07	2.73	2.79	2.57	2.93	2.27	2.95



ICU Students

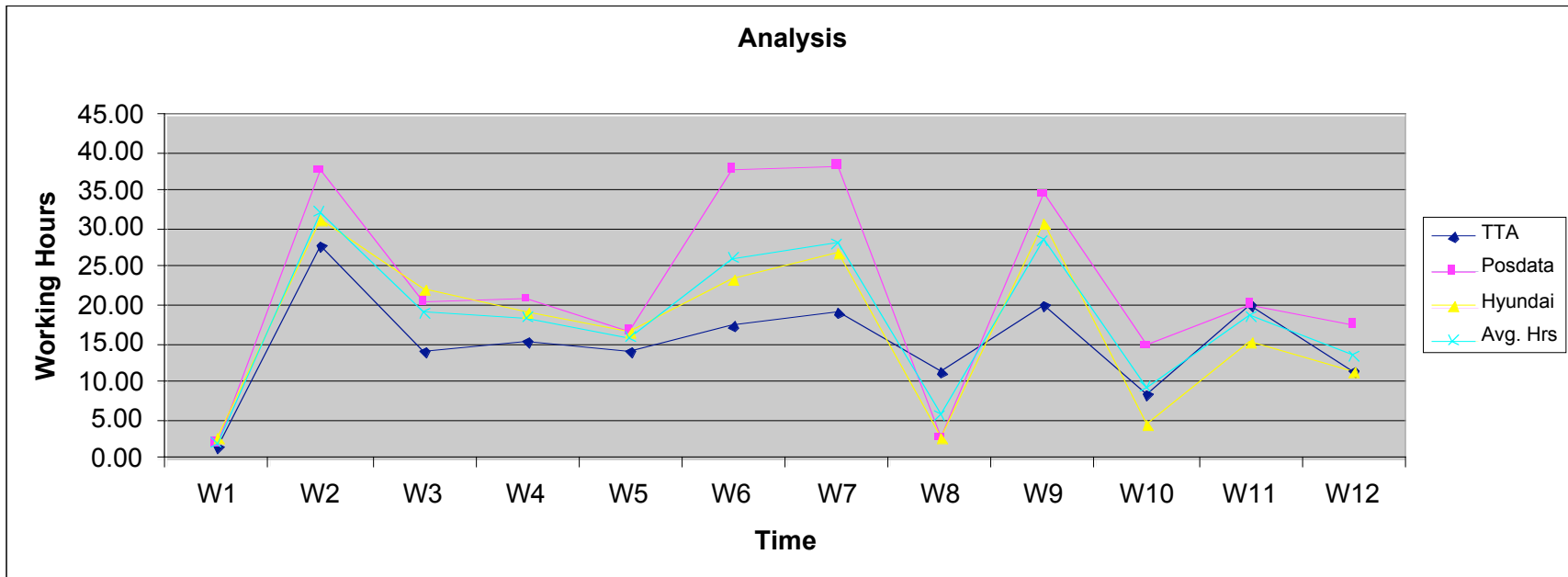
1) Total working hours (average hours for each team)

Team	W1	W2	W3	W4	W5	W6	W7	W8	W9	W10	W11	W12	Avg. Hrs
TTA	9.61	58.30	29.40	45.60	51.00	35.67	58.67	59.80	60.20	44.90	77.17	69.93	38.26
Posdata	61.94	90.03	85.83	91.45	92.37	106.50	105.70	85.70	105.63	105.13	98.03	101.97	88.02
Hyundai	39.39	69.03	74.00	76.93	74.27	78.53	74.97	58.22	77.97	77.70	77.83	76.23	68.69
Avg. Hrs	36.98	72.45	63.08	71.33	72.55	73.57	79.78	67.91	81.27	75.91	84.34	82.71	64.99



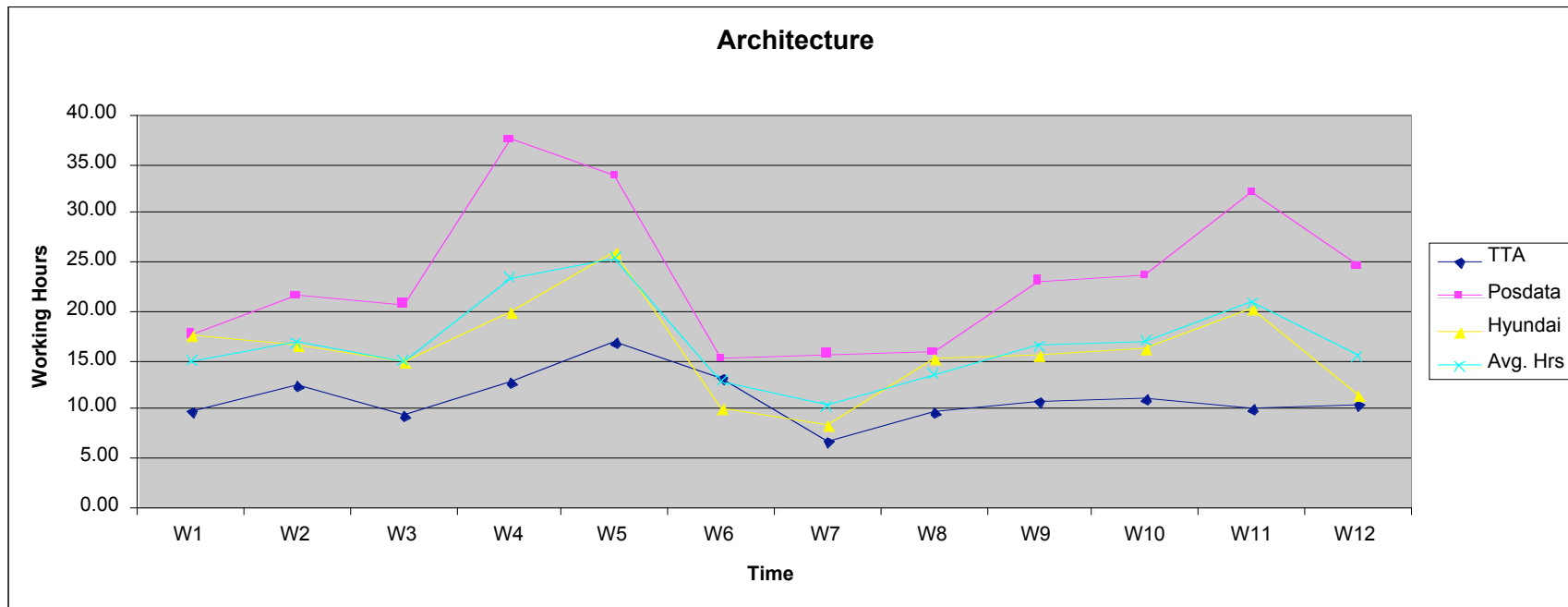
2) Analysis

Team	W1	W2	W3	W4	W5	W6	W7	W8	W9	W10	W11	W12	Avg. Hrs
TTA	1.50	27.83	14.15	15.37	14.03	17.25	19.10	11.33	20.10	8.53	20.20	11.53	15.02
Posdata	1.94	37.66	20.46	20.88	16.60	37.86	38.30	2.70	34.60	14.66	20.20	17.57	22.57
Hyundai	2.60	31.33	22.33	19.23	16.73	23.33	26.87	2.73	31.00	4.50	15.20	11.17	19.26
Avg. Hrs	2.01	32.27	18.98	18.49	15.79	26.15	28.09	5.59	28.57	9.23	18.53	13.42	18.95



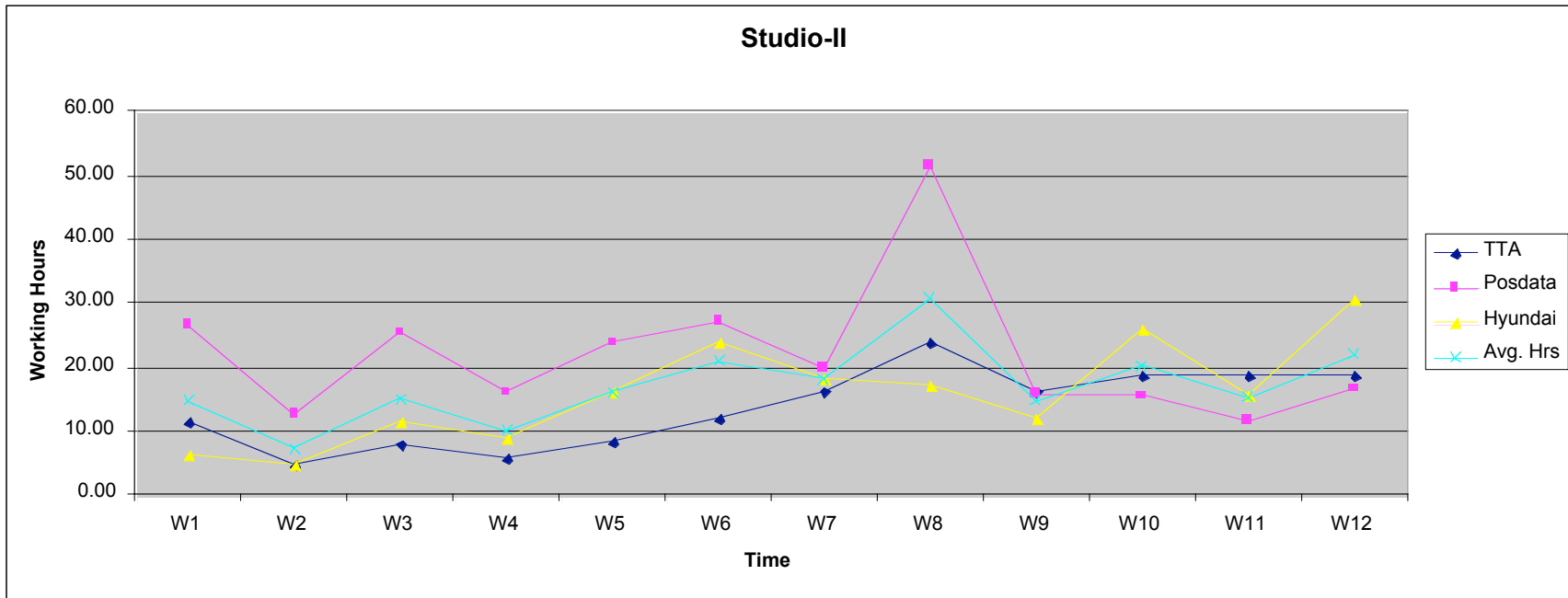
3) Architecture

Team	W1	W2	W3	W4	W5	W6	W7	W8	W9	W10	W11	W12	Avg. Hrs
TTA	9.83	12.43	9.40	12.77	16.77	13.25	6.83	9.60	10.77	11.00	10.00	10.43	12.41
Posdata	17.58	21.49	20.75	37.51	33.70	15.07	15.60	15.80	23.03	23.50	32.10	24.53	24.35
Hyundai	17.39	16.63	14.77	20.03	26.03	10.20	8.43	15.27	15.60	16.33	20.30	11.43	17.51
Avg. Hrs	14.93	16.85	14.97	23.44	25.50	12.84	10.29	13.56	16.47	16.94	20.80	15.47	18.09



4) Studio

Team	W1	W2	W3	W4	W5	W6	W7	W8	W9	W10	W11	W12	Avg. Hrs
TTA	11.50	4.67	8.00	5.67	8.33	12.00	16.33	23.67	16.33	18.50	18.67	18.67	8.36
Posdata	26.62	12.79	25.43	16.04	23.88	27.09	19.83	51.57	15.83	15.59	11.70	16.67	21.98
Hyundai	6.21	4.57	11.63	8.93	16.00	23.67	18.27	17.33	12.27	26.20	15.50	30.90	11.84
Avg. Hrs	14.78	7.34	15.02	10.21	16.07	20.92	18.14	30.86	14.81	20.10	15.29	22.08	14.06



5) Communication

Team	W1	W2	W3	W4	W5	W6	W7	W8	W9	W10	W11	W12	Avg. Hrs
TTA	4.16	3.93	2.90	3.87	4.53	5.50	4.20	3.77	3.80	4.20	3.53	3.20	4.15
Posdata	7.74	3.68	2.47	1.54	3.24	3.53	2.90	2.30	2.70	3.06	0.87	1.83	3.70
Hyundai	2.57	3.57	3.57	1.47	2.73	3.07	2.13	1.32	2.93	2.93	0.93	1.50	2.83
<i>Avg. Hrs</i>	4.82	3.73	2.98	2.29	3.50	4.03	3.08	2.46	3.14	3.40	1.78	2.18	3.56

